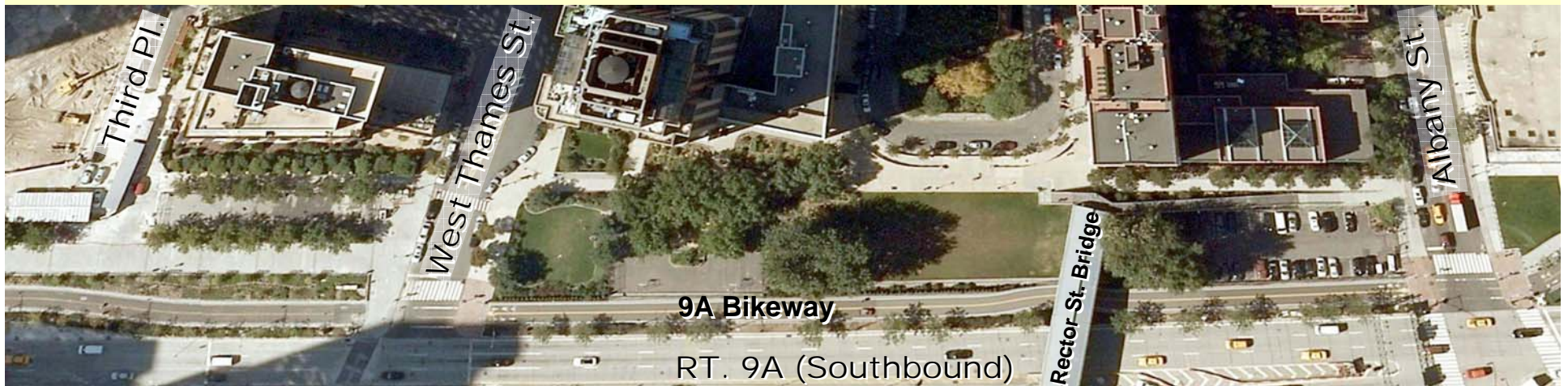


Presentation to Battery Park City Committee



West Thames Park

Working Group Summary

Tuesday, March 03, 2009

Battery Park City Authority



STATE OF NEW YORK

David A. Paterson
Governor



Astrid C. Glynn
Commissioner

**NEW YORK STATE
DEPARTMENT OF TRANSPORTATION**

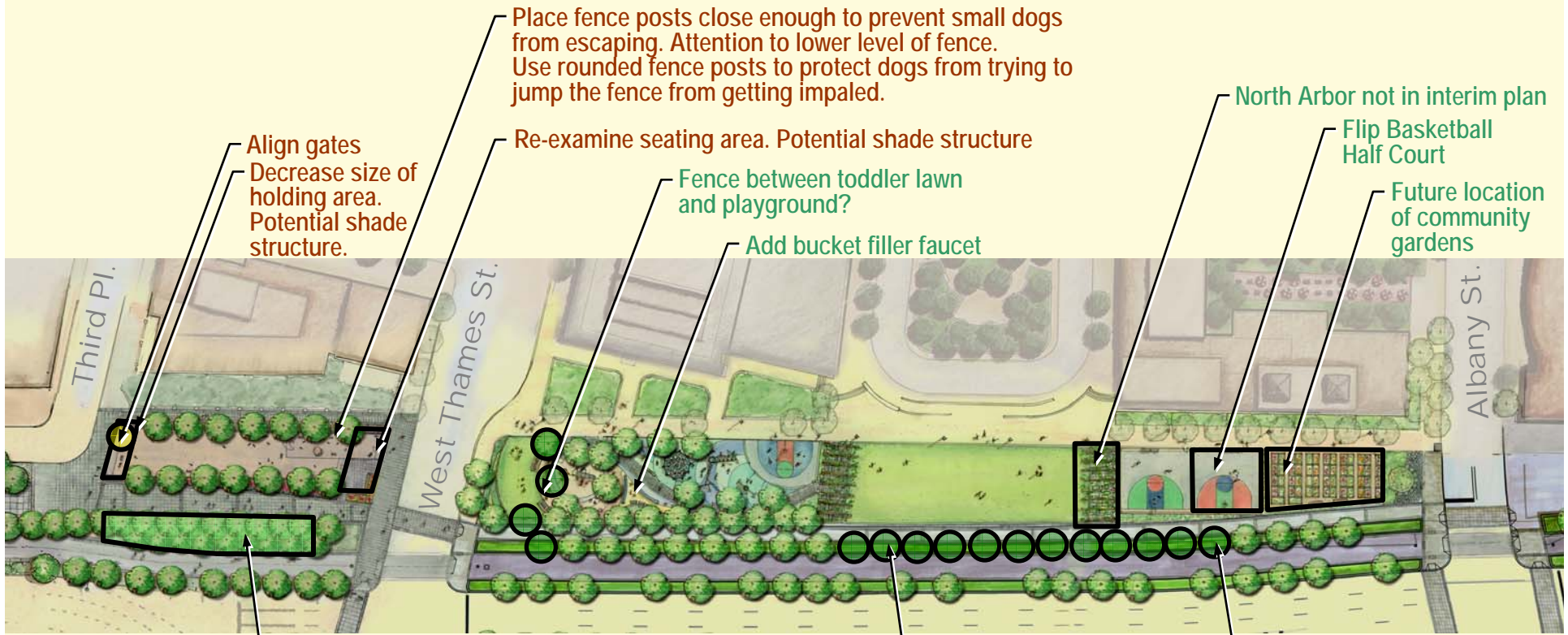
Phillip Eng, P.E.
Regional Director

Marie A. Corrado
Director, Major Projects

Joseph T. Brown, P.E.
Project Director, 9A







DOG RUN:

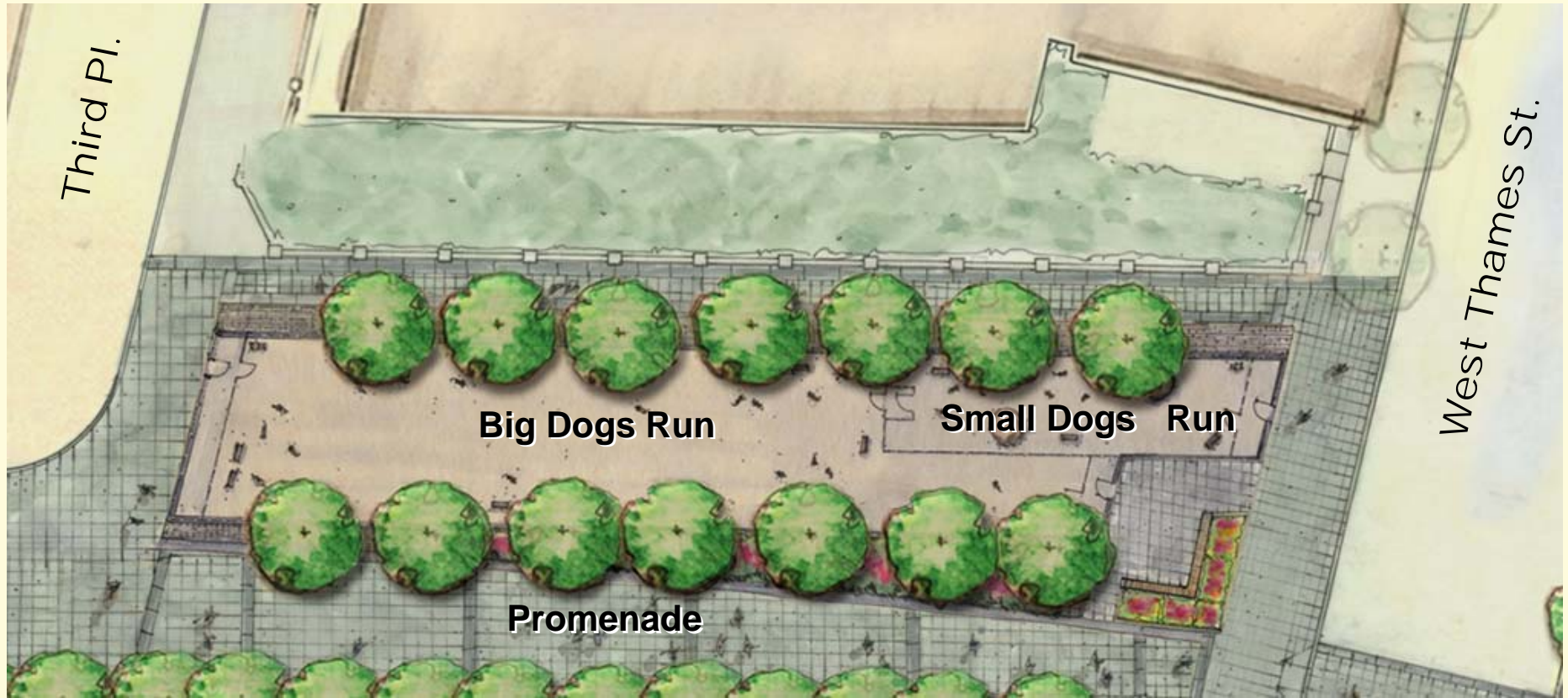
- Construct south portion of dog run first followed by the north portion. Add temporary exits so the temporary space still has two exits.
- Keep electrical boxes out of the actual dog run to reduce risk of electrical shock.
- Preference for pigmented instead of black asphalt to reduce heat island effect.
- Necessity for canine waste bag dispenser
- Install low tech feature on the swimming pool to give dog owners the ability to turn off faucet
- Need procedure to post on the park bulletin board (currently controlled by Conservancy)

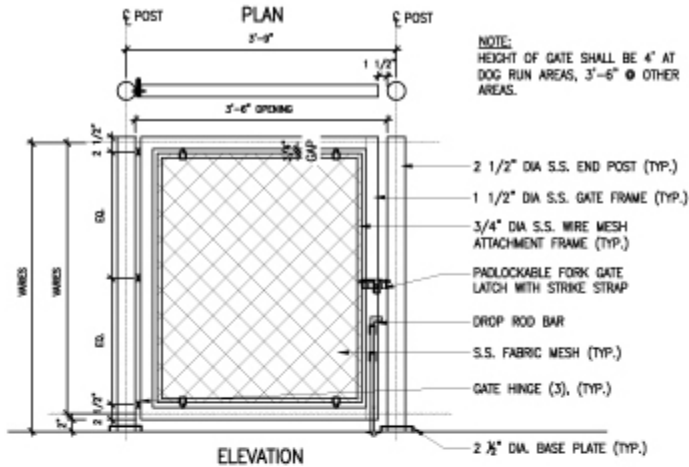
PARK, PLAYGROUND & GARDENS:

- Postpone construction until late October 2009. Many families are still using the park in the Fall.
- Do not start the construction process until all submittals are filed. Materials ordered should be ready to be brought in right away, especially the exotic play equipment.
- Come to a consensus whether space is valued over new equipment.

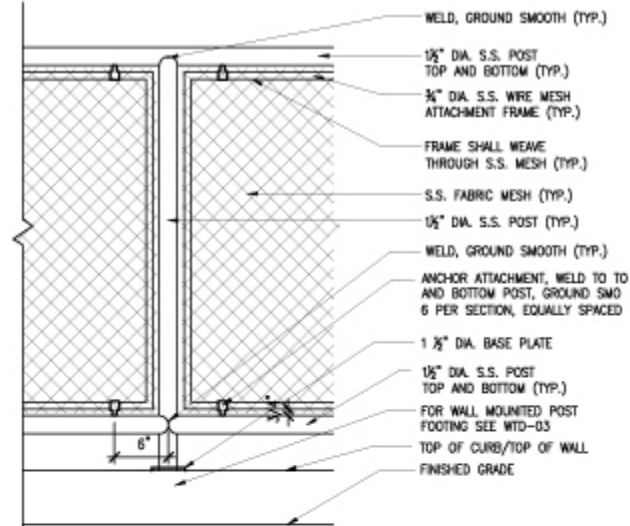
Dog Run



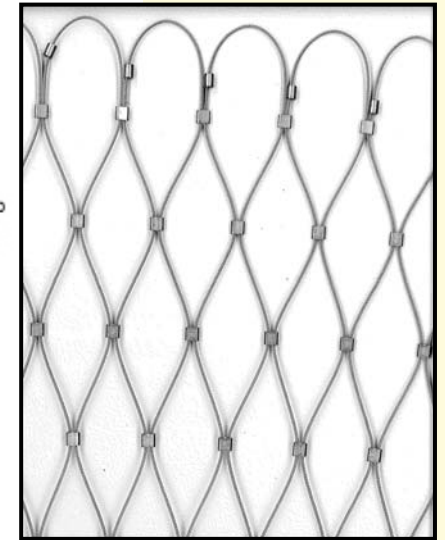




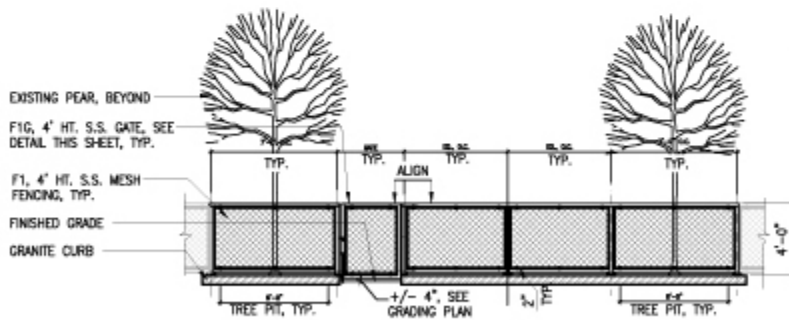
3 F1-G GATE AT DOG RUN, PLAYGROUND- ITEM 607.4221--11
1"=1'-0"



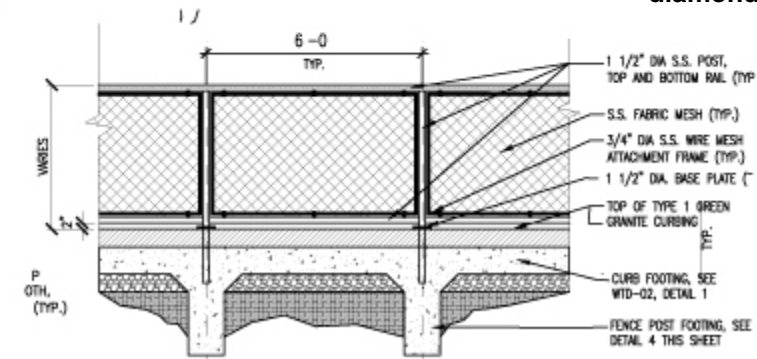
4 F1 - STAINLESS STEEL MESH ATTACHMENT - ITEM 607.4218--11



X-Tend Mesh
(maximum opening size of the "diamond" can be either 1" or 2")



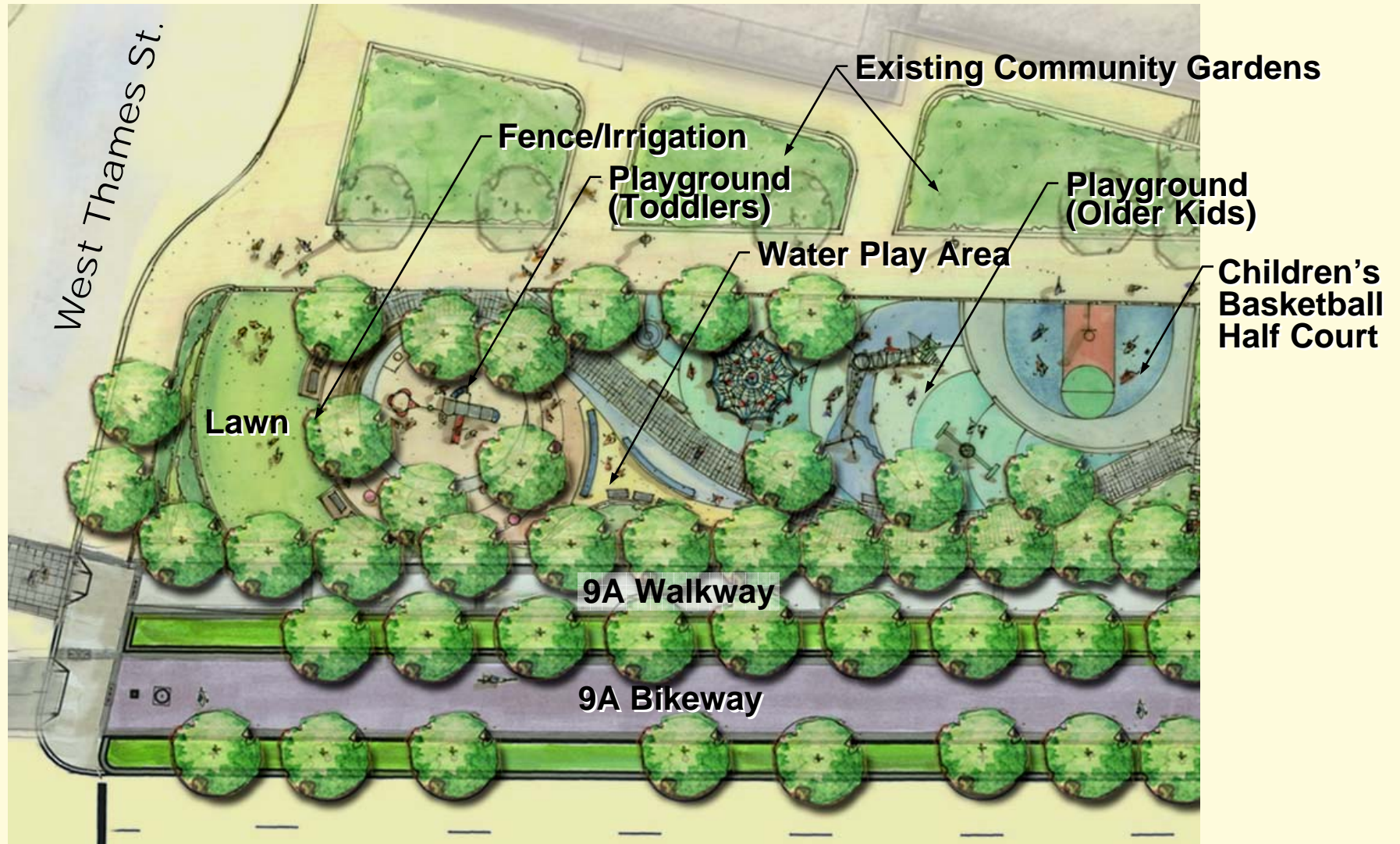
6 F1 - 4' FENCE AT DOG RUN/TREE PIT- ITEM 607.4218--11
1/4"=1'-0"

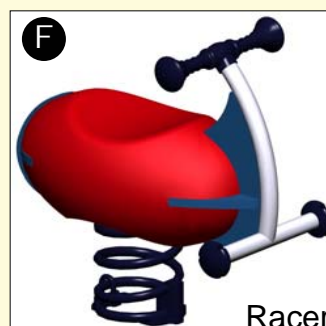
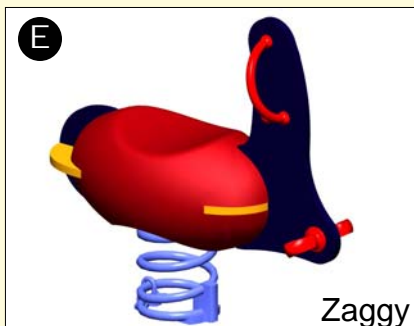
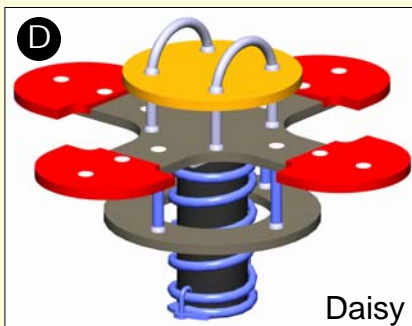
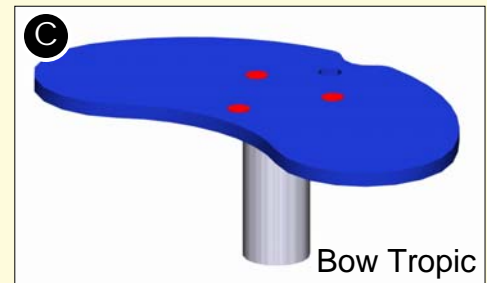
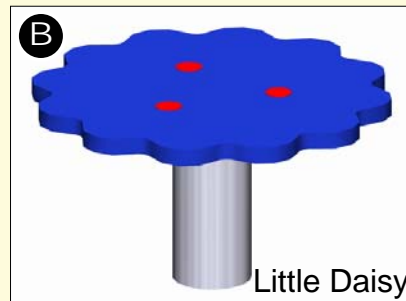
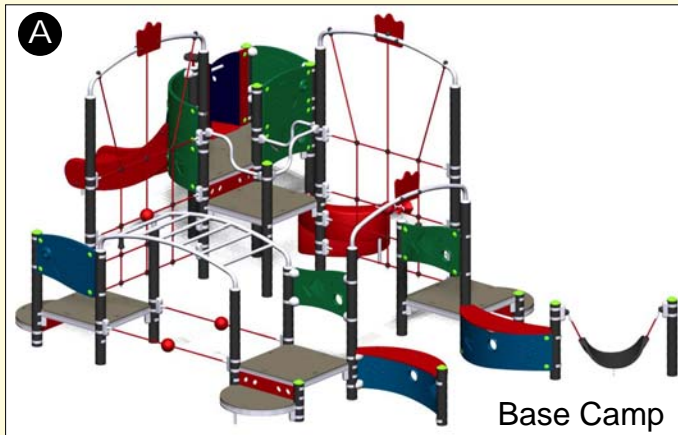
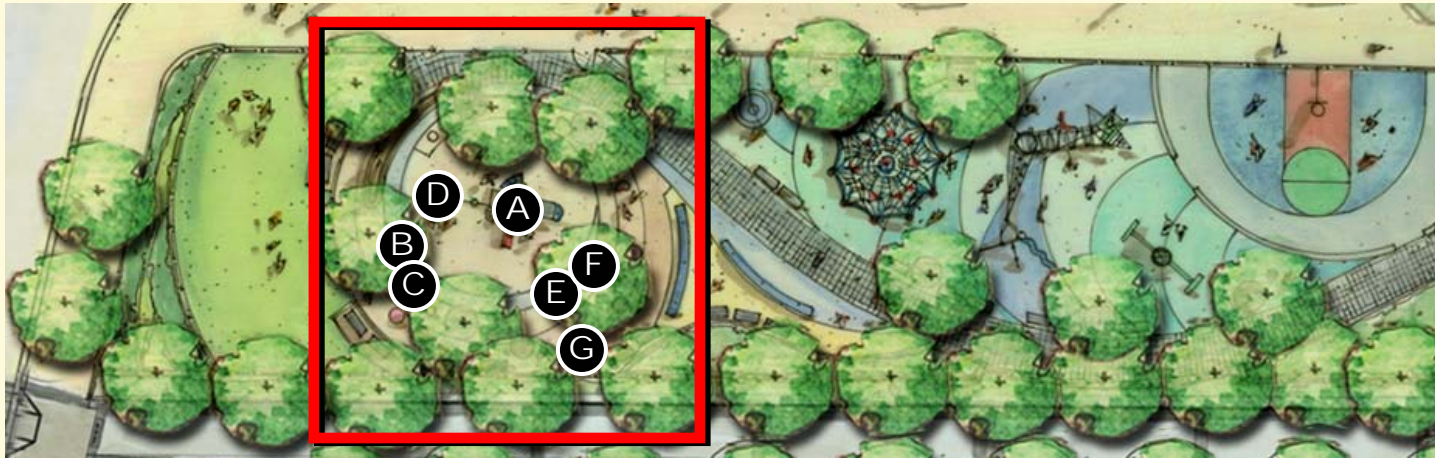


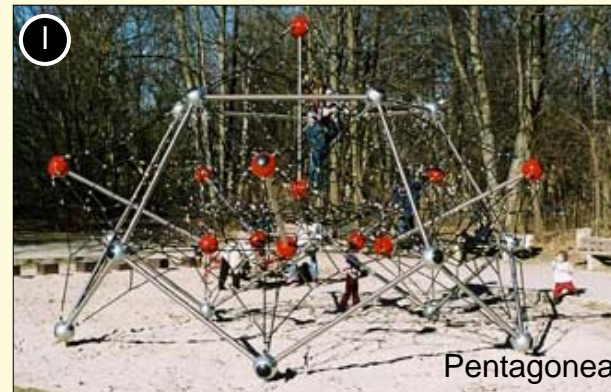
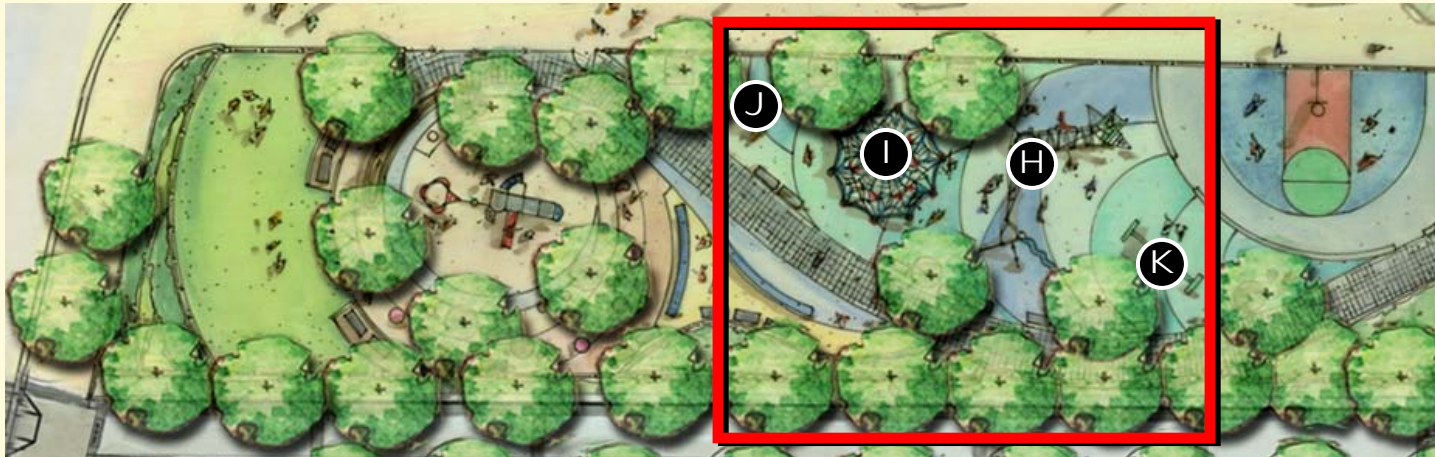
2 F1 - FENCE - ITEM 607.4218--11
1/2"=1'-0"

Playground







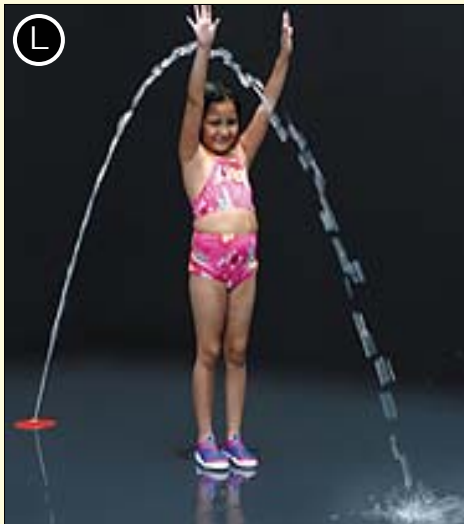


Biggo Swing



New York State Department of Transportation





Aqua Arch



Baby Long Legs



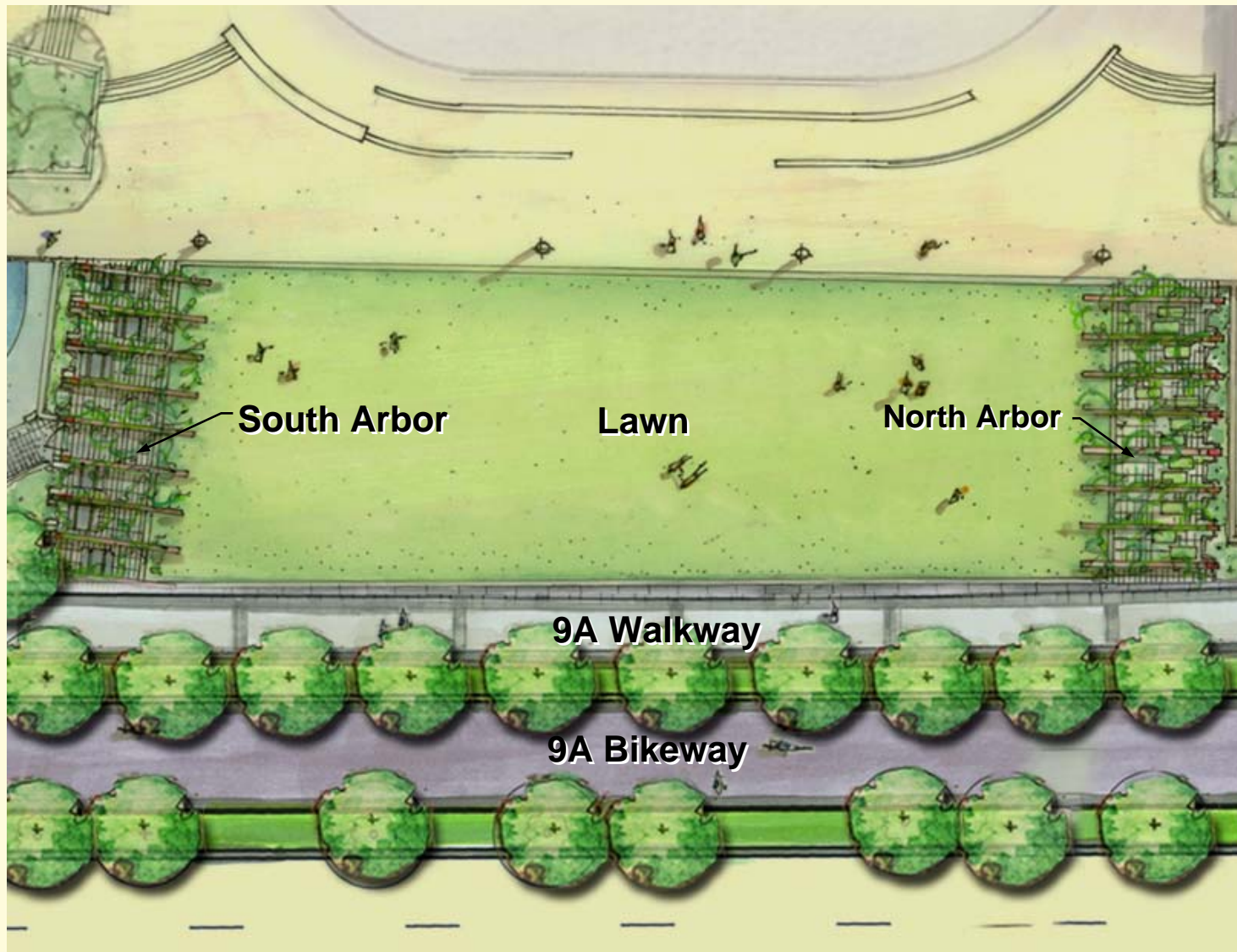
Water Round

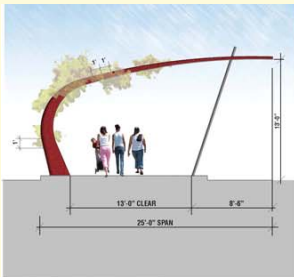


Moppet Poppet

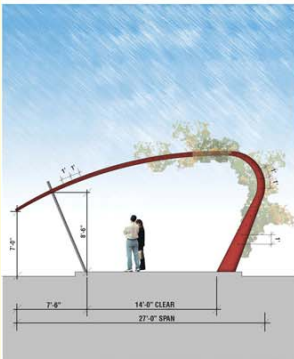
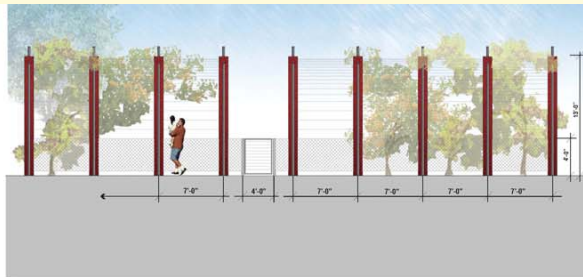
Lawn Area



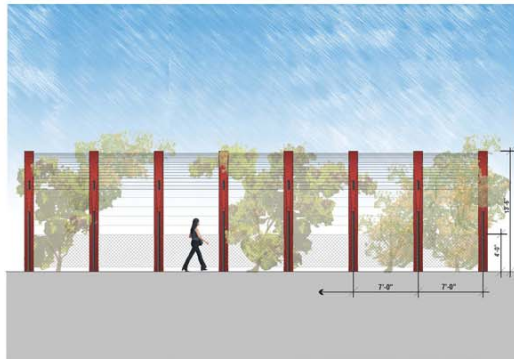




South Arbor Section- Elevation
1/4" = 1'-0"



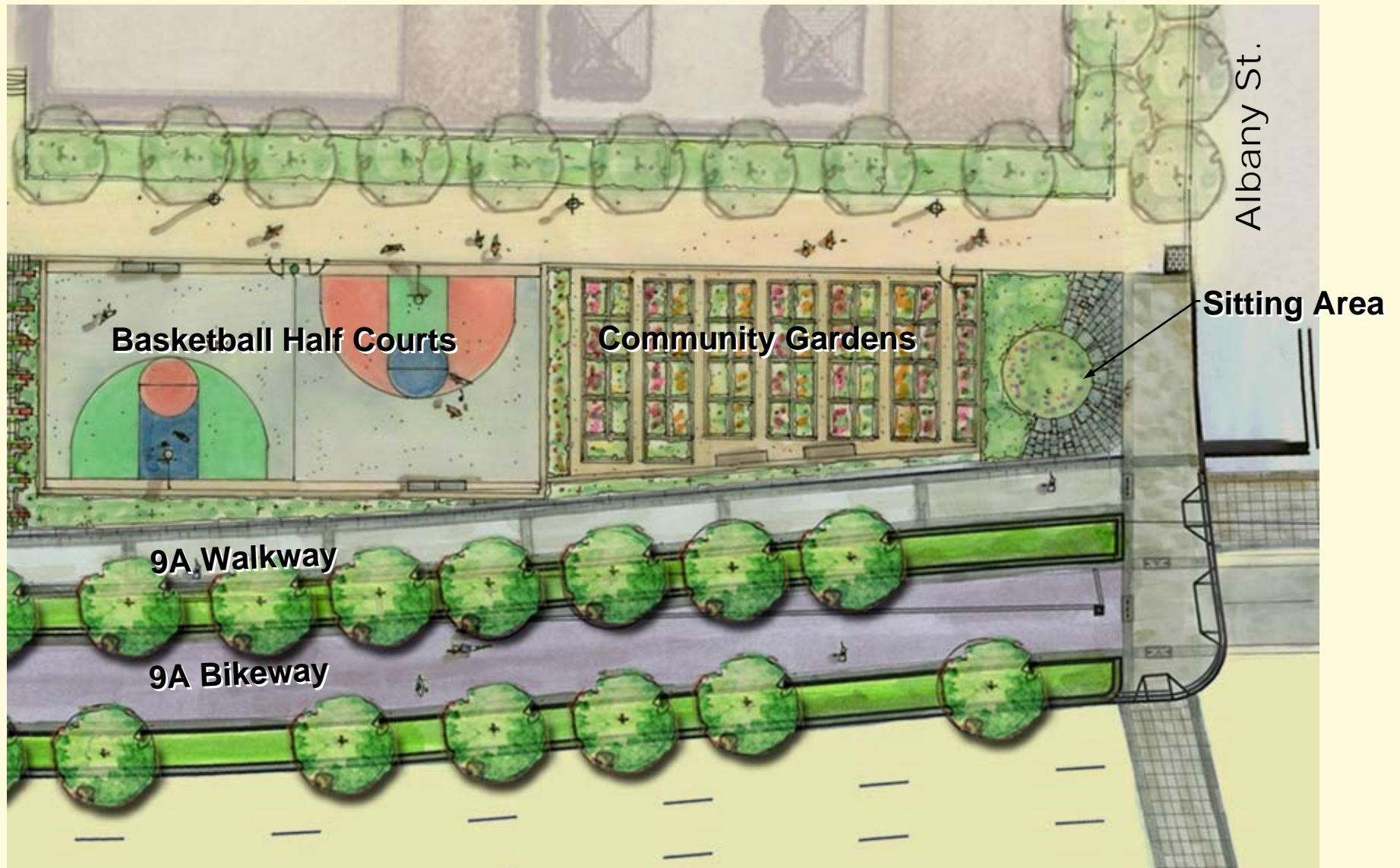
North Arbor Section- Elevation

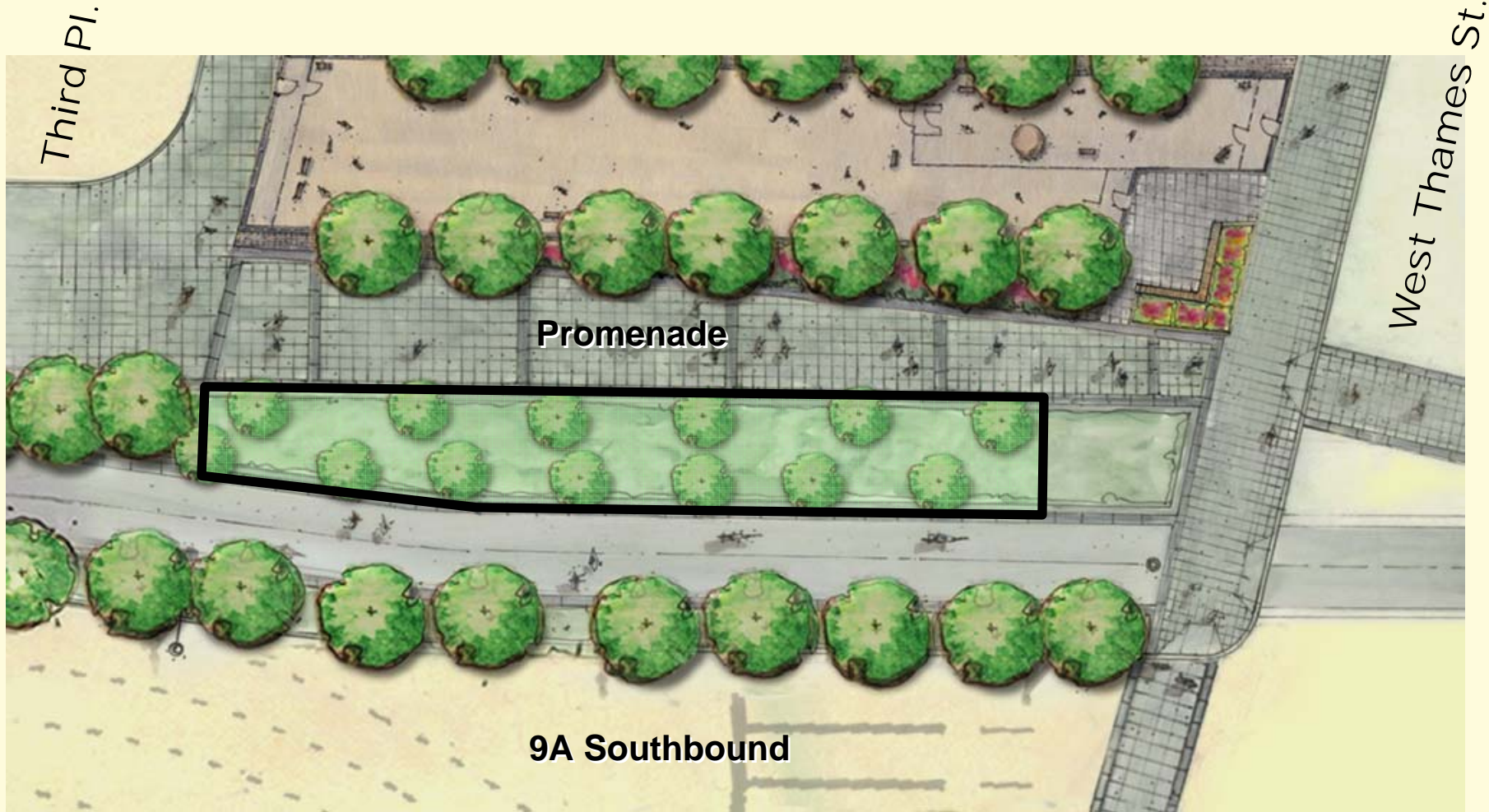


North Arbor Perspective

Community Gardens/ Basketball Half Courts

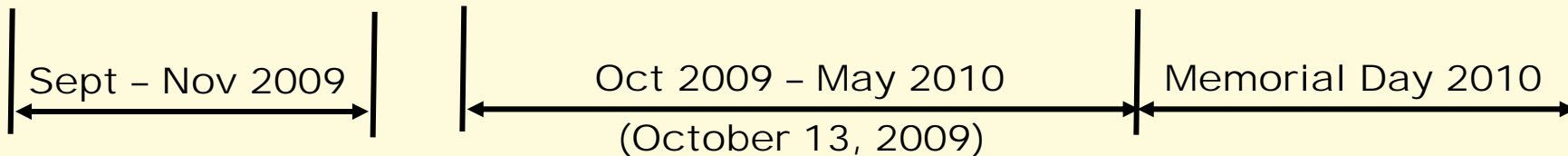
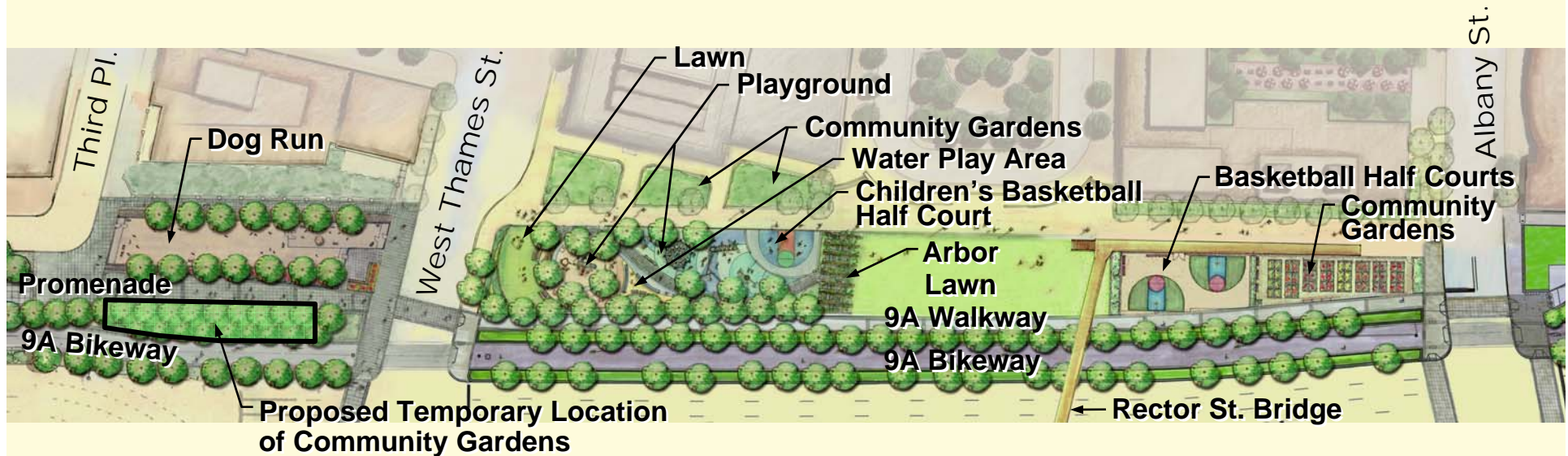






Construction Staging





Early Action Items (Summer 2009):

- Purchase play equipment
- Outline / inventory / plan community garden transplants
- Receive / process shop drawings
- Identify nurseries for spring planting
- Staging area / staging plan